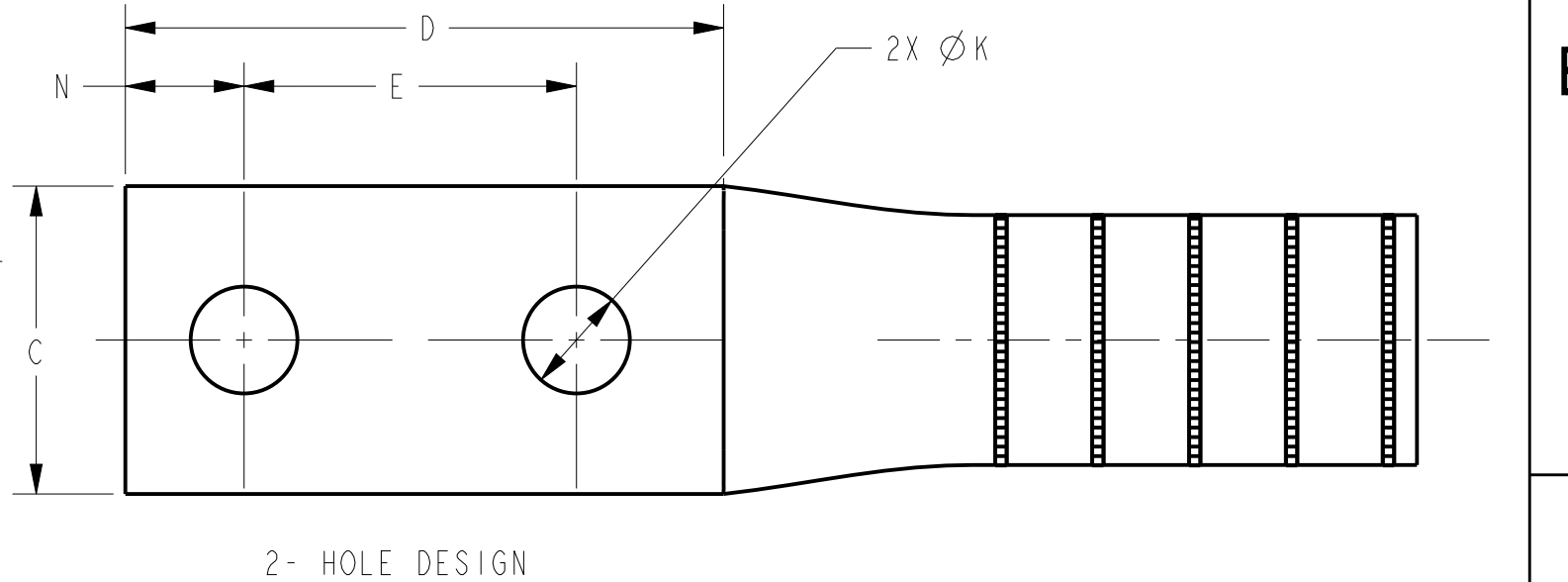
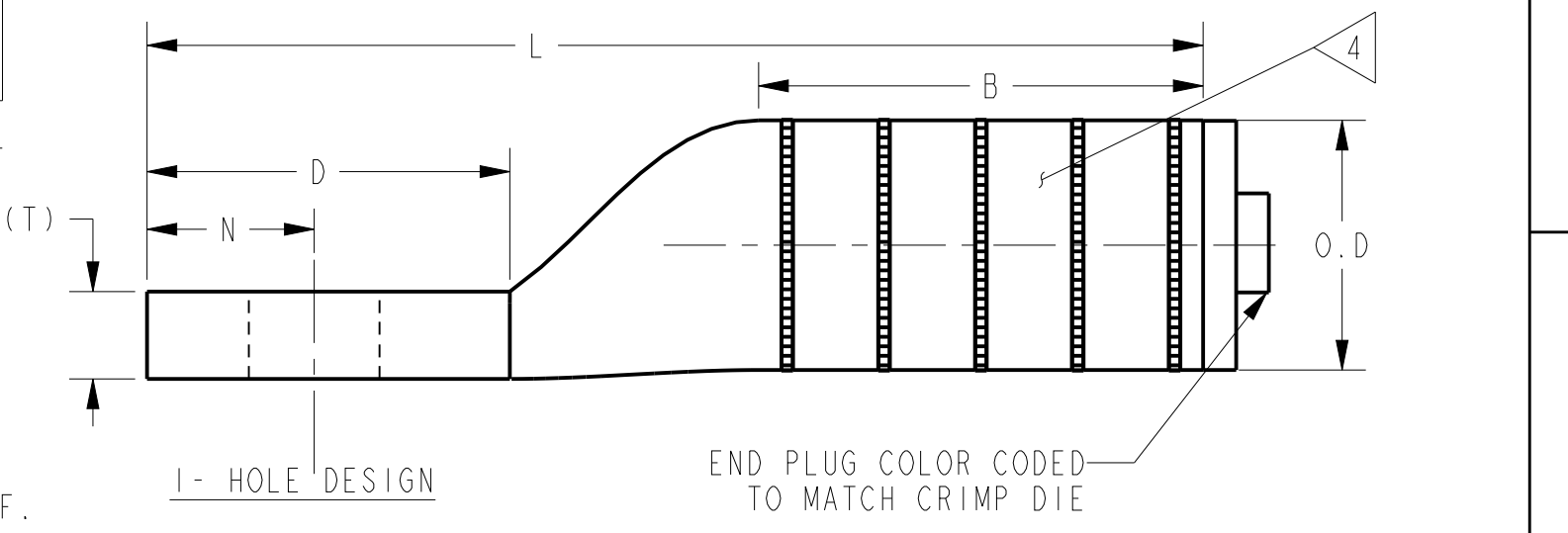
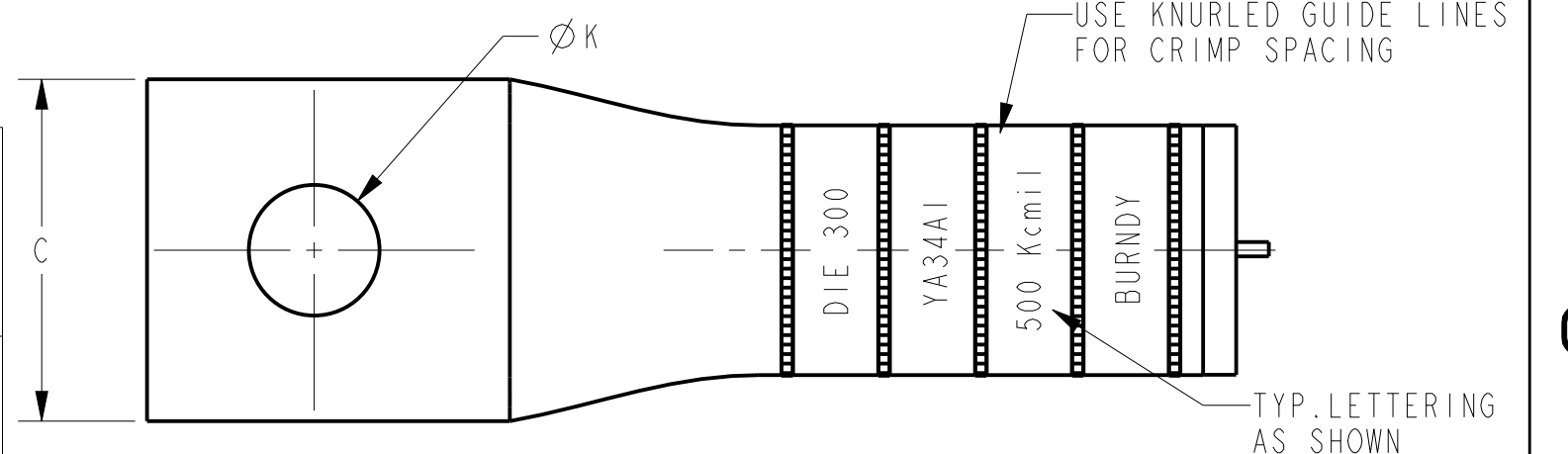


CATALOG NUMBER	CONDUCTOR SIZE		CONNECTOR DIMENSIONS-LINEAR MEASURE IN, [mm]											INFORMATION		
	ALUMINUM	COPPER	STUD SIZE	NO. OF HOLES	B	C	D	E	H	ϕ_K	L	N	O.D		(T)	PLATING
YA34A1	500 kcmil CLASS B CONCENTRIC COMPRESSED COMPACT SIW	500 kcmil CLASS B,C CONCENTRIC COMPRESSED COMPACT	5/8	1	2.34	1.80	1.91	--	--	.69	5.56	.88	1.32 [34]	.46	TIN	
YA34A2					[59]	[46]	[49]	--	--	[18]	[141]	[22]		[12]	NONE	
YA34A7					2.34	1.80	1.37	--	--	.56	5.02	.63		[12]	TIN	
YA34A3			350 Kcmil CCA DLO (551/22)	1/2	2	2.34	1.62	3.15	1.75	--	.56	6.80		.63	.46	TIN
YA34A4						[59]	[41]	[80]	[44]	[14]	[173]	[16]		[12]	NONE	
YA34A5			350 Kcmil CCA DLO (551/22)	3/8	2	2.34	1.80	1.89	1.00	--	.44	5.54		.44	.46	TIN
YA34A6						[59]	[46]	[48]	[25]	[11]	[141]	[11]		[12]	NONE	
YA34A390	350 Kcmil CCA DLO (551/22)	1/2	2	2.34	1.80	3.15	1.75	--	.56	6.80	.63	.46	NONE			
				[59]	[46]	[80]	[44]	[14]	[173]	[16]	[12]	TIN				
					2.34	1.62	3.15	1.75	4.59	.56	4.09	.63	.46	TIN		
					[59]	[41]	[80]	[44]	[117]	[14]	[104]	[16]	[12]			

REV	DATE	DESCRIPTION	ECO	BY	C'H'K.
AJ	09/15/2015 00:00:00 AM	ROLLMARKING DETAILS UPDATED	41819	NG	RG

COLOR CODE	BURNDY® INSTALLATION TOOLING (#CRIMPS)										DIELESS (#CRIMPS)	STRIP LENGTH		
	DIE INFORMATION		MECHANICAL		HYDRAULIC								MECHANICAL	HYDRAULIC
	DIE INDEX	TYPE	OUR840	MD6	Y34A Y34B	Y35, Y39 Y750 PAT750	Y46	Y45	Y48BH	Y60				
PINK	300	PINK DIE SET	--	--	--	U34ART (4)	U34ART (4)	U34ART (4)	C34AR (2)	L34ART (2)	--	Y81KFT (4) PAT81KFT (4) Y644 (1) PAT644 (1)	2 5/8"	
		NEST INDENTOR	--	--	--	--	P39D (1) P48PR-1	--	C39D(1) Y48PR-1	--	--			



UNINSULATED COMPRESSION TERMINAL MATERIAL: ALUMINUM TUBE

- NOTES:
- ALL HYLUGS™ ACCOMMODATE U.S. STANDARD WASHERS
 - REMOVE ALL EXCESS PENETROX™ FROM CONNECTOR AND ADJACENT CONDUCTOR PRIOR TO TAPING.
 - UL LISTED AND CSA CERTIFIED WIRE CONNECTORS. RATED 90 C (AL9CU) FOR USE WITH COPPER OR ALUMINUM CONDUCTOR. APPROVAL APPLY TO TIN PLATED CONNECTORS ONLY.
 - CONNECTOR BARRELS PREFILLED WITH PENETROX™
 - DIMENSIONS IN BRACKETS [] ARE IN MILLIMETERS ROUNDED OFF TO THE NEAREST MILLIMETER¹, UNLESS OTHERWISE NOTED, AND ARE FOR REFERENCE ONLY.
 - NO-OX-ID "A" COATED TO PREVENT FORMATION OF OXIDATION
 - CAN BE MOUNTED SIDE BY SIDE ON 4 -HOLE NEMA PAD.
 - ADD SUFFIX "DT" TO ORDER LUGS WITH CRIMP BARREL SEALED AIR TIGHT INSIDE THE TRANSITION.
 - CATALOG #PT6515 ADAPTOR IS REQUIRED TO USE "U" DIES IN Y45 SERIES TOOLS.
 - CATALOG #PUADP-1 ADAPTOR IS REQUIRED TO USE "U" DIES IN Y46 SERIES TOOLS.
 - Y35P3 INDENTOR ADAPTOR REQUIRED FOR "Y34PR" TYPE INDENTORS.
 - FOR USE BY CUSTOMERS THAT HAVE THIS HYPRESS™. NO NEW HYPRESSES™ ARE BEING PROCESSED.
 - UL LISTED WITH DLO COPPER CLAD ALUMINUM CONDUCTOR USING Y644 TOOLS ONLY.
 - ADD SUFFIX "U" TO ORDER LUGS WITH UNDRILLED TONGUE.

HYLUG™	
ITEM NO:	NA
CAT. NO:	YA34A-(SEE TABLE)
DRAWN BY:	E.S.K 7/21/72
CHECKER:	S.F.P 8/01/72
DSN APPVL:	R.B 8/02/72
MFG APPVL:	--
QA APPVL:	D.VARIO 6/18/95
MKT APPVL:	P.WERTHMAN 6/18/95
PROD FAM:	--
PROJECT #:	--
DOCUMENT TYPE:	Sales
REL LEVEL:	Released



REV: PE0200